



BASF Signum®

Unmatched freshness



Your crop deserves **Signum[®]**.

How SIGNUM Benefits you:

Superior Fruit finish



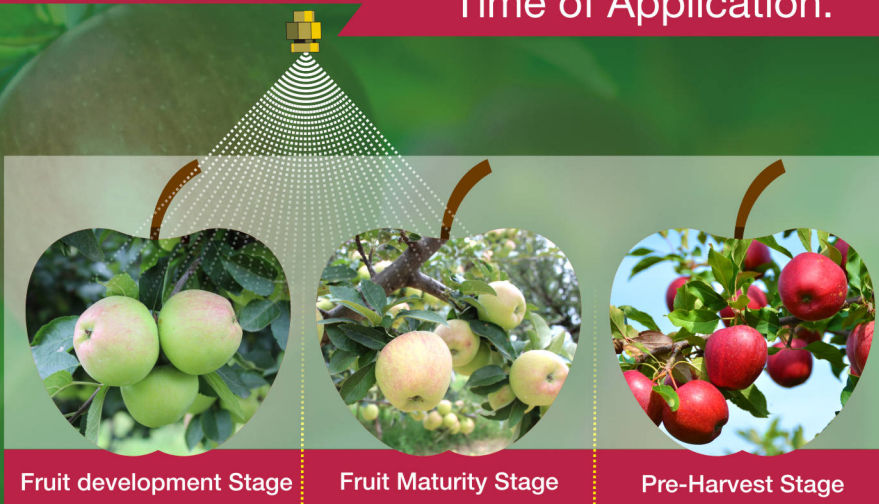
Better leaf retention after harvest

Unmatched freshness

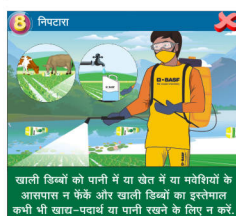
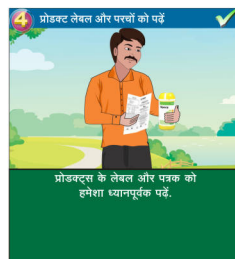
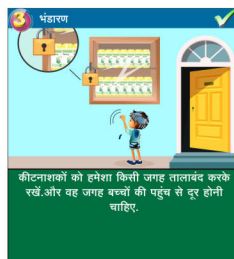
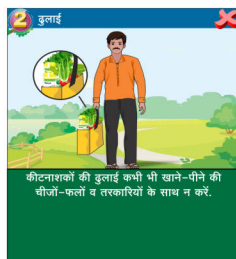
Excellent Disease Control

- Provides extended residual protection due to Dual mode of action
- Fetches higher price
 - Uniform fruit color development
 - Better fruit firmness
- Better leaf retention after harvest-supports good bearing next year.

Time of Application:



Spray 30 to 40 days before harvest



1.Recommended on - Grape, Chilli, Apple, Onion & Tomato. 2.BASF does not recommend any tank mix with this product. 3.The Product recommendations in this leaflet is based on approved label claims. 4.This release supercedes all previous communications on this product.

Disclaimer : 1. All the information in this handout / manual is the property of BASF Group. Reproduction of any information or a portion of it without written permission of BASF prohibited. 2. The information in the handout / manual is based on internal research and field observations . The product performance as per the information contained inside may vary as per local condition & various other parameters for which the company shall not be held liable for any direct and / or indirect damages.

Warranty: BIL warrants that PRODUCT shall meet the technical specification as per the Registration certificate issued by Central Insecticides Board to BIL. BIL shall not be responsible for any deterioration in the quality/quantity on account of the wrong handling, spraying or storage or negligence attributable to its customer/s.

Corporate office: BASF India Limited, Plot No.12,TTC Area, Thane Belapur Road,Turbhe, Navi Mumbai - 400705,India

